

Histology Quiz

Question 1

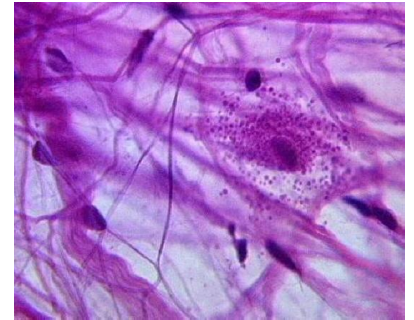
Identify this tissue:

Identify the thin strands:

Identify the thick strands:

Identify the small dark purple structures:

Identify the large granular-looking cell:



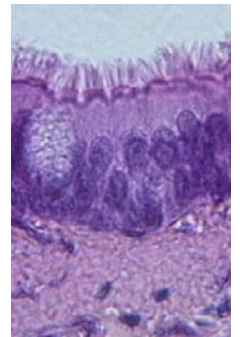
Question 2

Identify this tissue:

Identify light grey region at the top of the image:

Identify the oval granular structure on the left side of the image:

Identify one major function of this specific type of tissue



Question 3

Identify this tissue:

Identify the dark circular structure at the center:

Identify the series of ring-like layers surrounding the center:

Identify the fine meshwork of structures seen throughout:

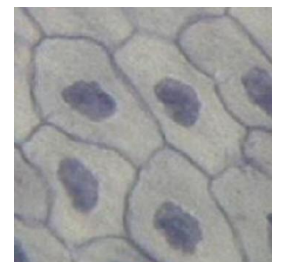


Question 4

Identify this tissue (Hint: image shows a *surface view*):

Identify the dark round structures:

Identify a location where this tissue is found:



Question 5

Identify this tissue (Hint: it's not muscle):

What type of cell produces this tissue:

Identify the elongated purple structures:

Identify a location where this tissue is found:

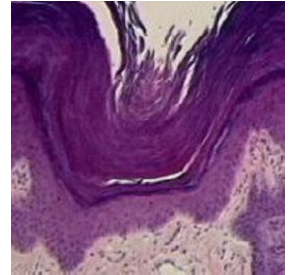


Question 6

Identify the purple layer of tissue just above the pink region at the bottom of the image:

What is the thick purple debris above this tissue:

Identify a location where this tissue is found:



Question 7

Identify this tissue:

Identify several locations where this tissue found:



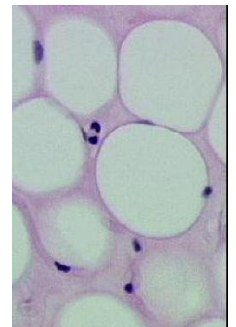
Question 8

Identify this tissue:

Identify the specific cell type shown here:

Identify the round white structures:

Identify the small dark purple structures:



Question 9

Identify this tissue:

Identify the large blue cells to the right:

Identify the dark blue regions around the cells:

Identify the light opaque regions between the cells:

Identify the dark fibrous region to the left:

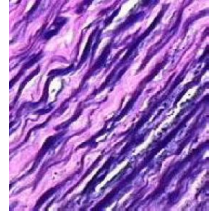


Question 10

Identify this tissue:

Identify the thick strands:

Identify the function of this tissue:

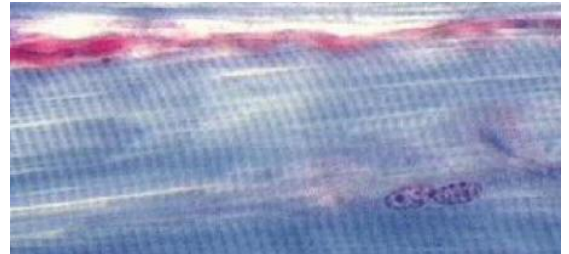


Question 11

Identify this tissue:

Identify the small dark purple structures:

Identify the patterns of light and dark bands:

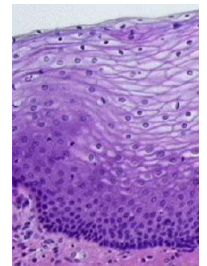


Question 12

Identify this tissue (be specific):

Identify a location where this tissue is found:

Identify the region of closely-packed cells near the bottom:



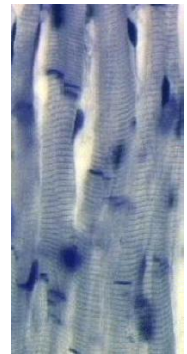
Question 13

Identify this tissue:

Identify the darkest lines here:

Identify the unique "electrical" connections in this tissue:

Identify a location for this tissue:



Question 14

Identify this large cell:

Identify the large processes extending from the cell:

Identify the tiny (specks) surrounding the large cell:

What is the function of these tiny peripheral structures:

